

Username:

Password:

Disassembling the Wii

Method : Taking it Apart

There are plenty of reasons to take apart a wii, whatever your case may be here's a guide to doing it.

REQUIRED TOOLS AND ITEMS

- A Nintendo Wii (of course)
- A Tri-wing screwdriver Size 3 (please save us all the trouble and don't try and use a flathead)
 - This NEEDS to have a long shaft. There is a part of the wii that has recessed screws.
- A mini Phillips screwdriver
- A small plate or container (to hold the screws in)
- A couple pieces of tape (use the tape to keep track of what screws belong to part of the wii)
- Soft Working surface (the wii scratches very easily)
- A razor blade and a pair of tweezers will help remove items

Step 1. Removing the Battery

- Position the Wii like the picture below and you will see a single screw
- Remove it and pull the battery tray out



Step 2. Removing 5 screws /w plastic covers

- When the battery was removed it revealed 1 screw. There are four more hidden underneath plastic stickers and rubber feet. Refer to the picture for their locations
- Peel up the plastic stickers with a razor and pull it away with a tweezers. (place the stickers neatly away from your working area if you plan on putting them back on.)
- Remove the screws (fix the 5 screws to a single piece of scotch tape and put it in your container.)
- For reference the black screw is the one on the top left, the two longer screws are located on the bottom and the shorter ones on the top.
- This is important to remember because you don't want to put the screws in the wrong holes when reassembling the unit.



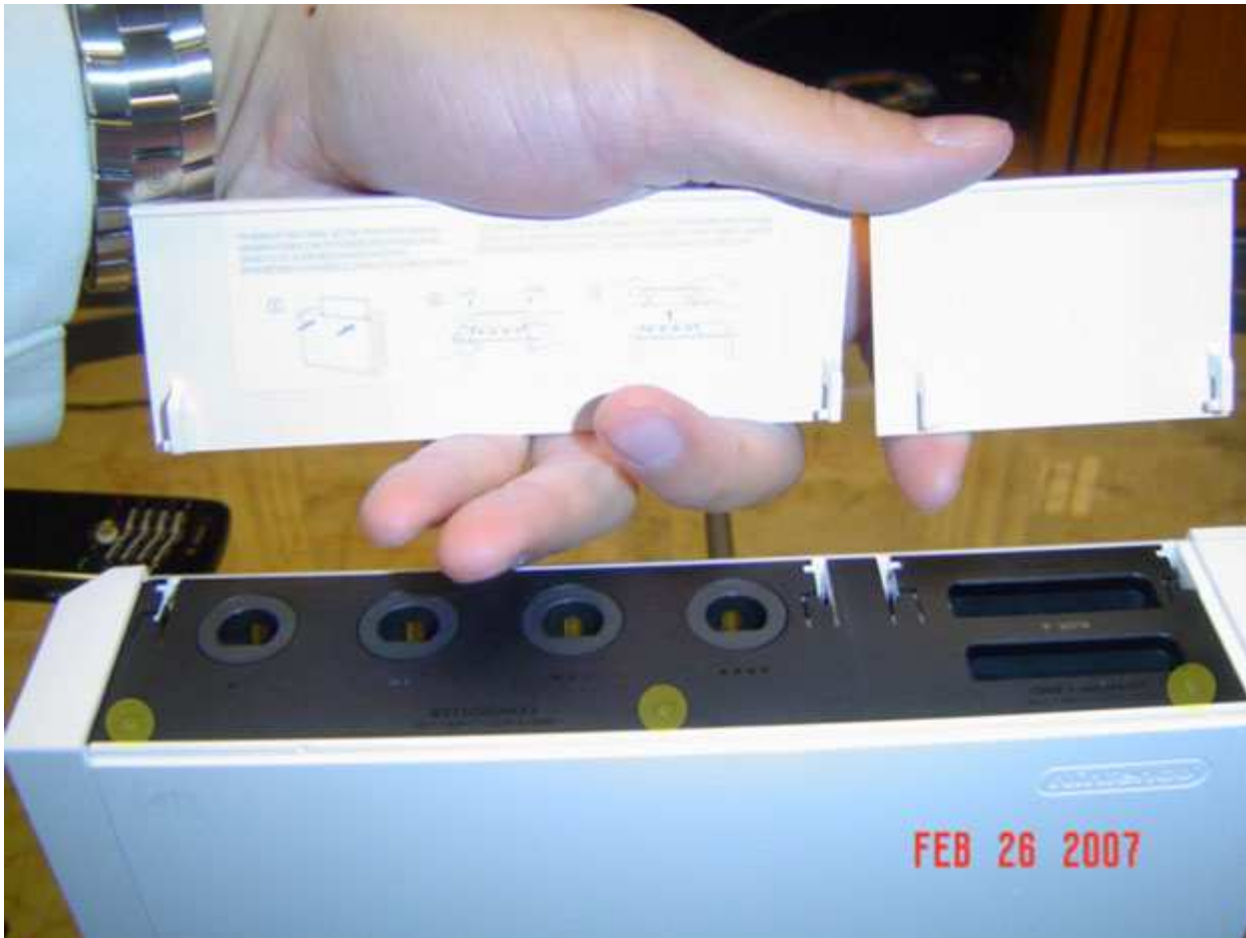
Step 3. Removing Rubber Feet and removing screws

- Position the wii like in the picture. (use the notch as a guide)
- There are 2 rubber feet on top and 2 plastic stickers on the bottom that you need to remove. (do not remove the rubber feet on the bottom. Not necessary)
- Remove the screws and fix them to a second piece of tape.
- Take note that the two black screws go into the faceplate/bottom and the two silver ones go into the top/recessed holes.



Step 4. Removing GameCube port covers and screws

- There is a section of the wii that houses the ports for the Gamecube accessories. The 2 covers to this section will flip open and easily detach. If you look there's a sticker on the inside depicting how to remove the covers. They snap off with light pressure. Remove them now.
- Now remove the 3 black screws here and attach them to a 3rd piece of tape. Notice that the screw closest the front/face of the wii is the longest of the 3 screws.



Step 5. Removing the face and detaching the cable

- Now position the wii with the face upwards with the dvd tray on the bottom.
- Flip the wii face upwards and away from you SLOWLY and look for the connection marked in the picture.
- Use a flathead of tweezers to pull the WHITE connector out of the socket.
- Set aside the face plate in a safe location.



Step 6. Removing the GameCube black cover and screws

- The black covering you saw earlier should lift out easily now. (Although it only goes one way)
- Remove the 4 screws and attach them to a 4th piece of tape and set them aside.
- If the position of the wii is like in the picture then the top screws are tri-wing and the bottoms screws are Phillips.



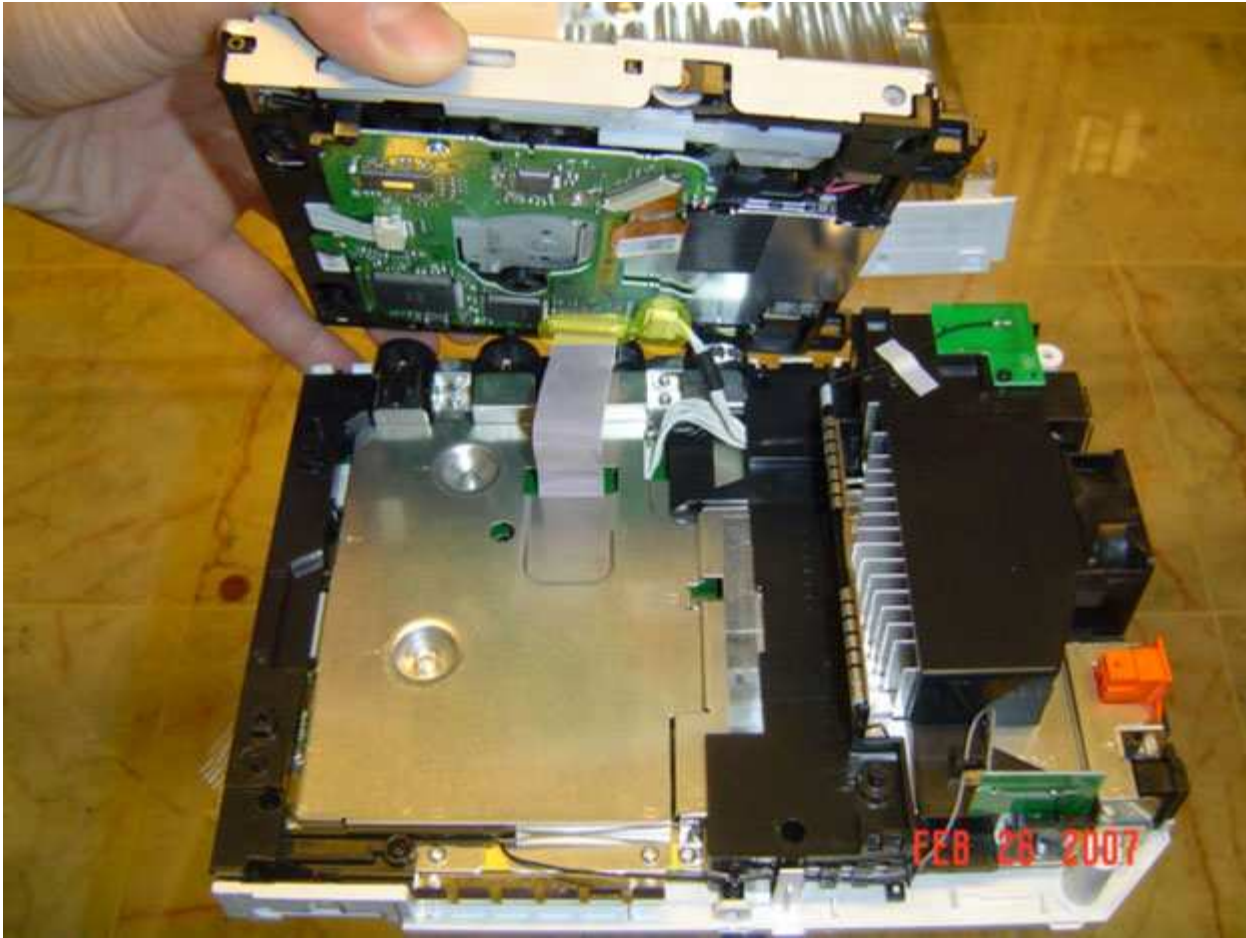
Step 7. Opening the Wii up and removing 4 screws

- Position the wii with the notch on the bottom right.
- Lift the right side of the wii up and the cover should detach
- Flip the cover over to the left
- The heat sink may or may not come with the cover (if not just remove it)
- Remove the 4 screws marked in the picture. Fix them to a 5th piece of tape. (although these screws are much different than the rest you've encountered.)



Step 8. Disassembling DVDROM drive

- Be extremely careful with this step. Slowly flip the top portion of the drive like in the picture. Notice how short those wires are?
- Remove the White connection first. It's similar to the one earlier on the face of the wii
 - TAKE YOUR TIME ON THIS STEP
- Now the thicker cable is removed by flipping the brown plastic tab upwards
 - The cable will just slide out now



Step 9. Do what you need to do!

- You're all done! Enjoy!
- The marked area is an ideal spot for a modchip

o Not that we condone the use of modchips for illegal activities or anything.



- [News](#)
- [Forum](#)
- [Guides](#)
- [Modchips](#)
- [Hardware](#)
- [Software](#)
- [Shops](#)
- [Disclaimer](#)